

PSL CONTROL INTERFACE / ARBITRARY WAVEFORM GENERATOR

Release: V1.0 | Author: MM | Date: 12/05/2016

MODEL NO

PSL-AWG

DESCRIPTION:

The Pulse Seed Laser Control Interface / Arbitrary Waveform Generator is a device that allows the programming/generation of arbitrary pulse waveforms. The internal storage includes 8 standard square pulse width profiles from 5 to 500ns. Freely programmable waveform curve shapes are also accepted. Arbitrary waveform pulse profiles can be uploaded directly from a two column (time vs amplitude) comma separated file (.csv). It generates periodic internal trigger frequencies and allows for external trigger frequency input. It is compatible with the PSL pulse analog drivers from MWTechnologies or any other drivers with analog input in order to modulate current with specific pulse shapes. It includes USB interface and dedicated software control application with GUI.

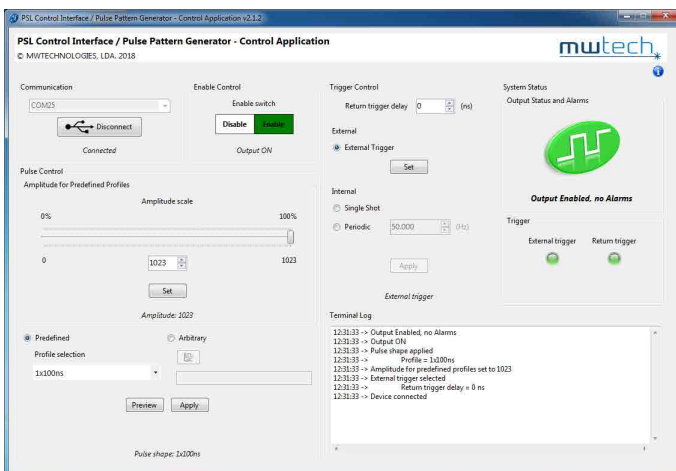


SPECIFICATIONS

Parameter	Specification	VDC
Supply voltage	+5	-
Amplitude digital level control	0 – 255 (8-bit)	ns
Pulse width waveform timing range	5 – 500 ⁽¹⁾	ns
Pulse width waveform max. resolution	5	-
Internal Pulse repetition frequency ⁽²⁾	1Hz to 1MHz (with single-shot)	-
Coaxial output, 50Ω	0 – 2V ,SMA connector	-
Trigger input	50Ω, 5 V, SMA connector	-
Interface	USB	mm
Dimensions	165 x 125 x 302	

⁽¹⁾ higher ranges available
⁽²⁾ external trigger input available

SOFTWARE GRAPHICAL USER INTERFACE



MODEL NO

PSL-AWG

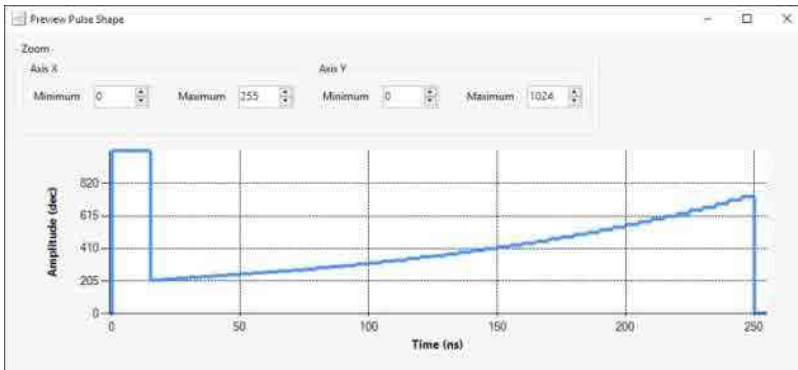
DESCRIPTION:

The Pulse Seed Laser Control Interface / Arbitrary Waveform Generator is a device that allows the programming/generation of arbitrary pulse waveforms. The internal storage includes 8 standard square pulse width profiles from 5 to 500ns. Freely programmable waveform curve shapes are also accepted. Arbitrary waveform pulse profiles can be uploaded directly from a two column (time vs amplitude) comma separated file (.csv). It generates periodic internal trigger frequencies and allows for external trigger frequency input. It is compatible with the PSL pulse analog drivers from MWTechnologies or any other drivers with analog input in order to modulate current with specific pulse shapes. It includes USB interface and dedicated software control application with GUI.



PULSE WAVEFORM UPLOADED PROFILE EXAMPLES

MULTI-DISTORTED 250ns PULSE WAVEFORM PREVIEW



GAUSSIAN 100ns PULSE WAVEFORM PREVIEW

